



THE BETTER WAY OF LIGHTING

tempLED references

An excerpt from the most diverse areas of application



Our customer Hüttenwerke Krupp Mannesmann



Challenges:

Great heights
High temperatures
High levels of dust and pollution

Solutions:

tempLED RayLine Eco	tempLED RayWay HT
tempLED RayField V2	tempLED RayBeam 500
tempLED RayBeam Hi V2 HT	tempLED RayBeam Pro HT
tempLED RayLance V2	tempLED RayProof V2
tempLED RayBase V2	tempLED RayFlex

One of the largest projects we have implemented to date, with over 1,000 LED industrial luminaires installed indoors and outdoors. Five of our luminaire series were used in the high-temperature sector, including our tempLED RayWay orientation luminaire, which illuminates the stair towers, tunnels and other areas with low ceilings in the steelworks, as well as our tempLED RayBase V2 workplace luminaire, which is installed in the steelworks, the blast furnace and the sintering plant. In the outdoor area, on the other hand, tempLED RayField V2 and tempLED RayFlex are convincing. Our LED line light tempLED RayLine Eco illuminates the switch houses and electrical workshops with uniform illumination.





Our customer BGH Edelstahlwerke

Challenges:

Uniform illumination
High temperatures
High degree of contamination
High altitudes

Solutions:

tempLED RayBeam Lite
tempLED RayBeam Pro

Temperatures up to 70°C are no problem for our tempLED RayBeam Pro.





Our customer STIHL

Challenges:

Great heights
High bay lighting
Spot illumination in outdoor and indoor areas
Insect friendly

Solutions:

tempLED RayLance V2
tempLED RayTrack
tempLED RayProof V2

STIHL has been a loyal customer for many years and is happy to take advantage of our top service.





Our customer the tennis hotel Sonnenhügel

Challenges:

Uniform illumination
Low glare

Solutions:

tempLED RayLine Eco

What an extraordinary project we were able to complete at the end of 2022: The Sonnenhügel tennis hotel in Bad Kissingen had its tennis hall equipped with a total of 76 tempLED RayLine Eco. A total length of 128 meters of line light illuminates the hall with uniform illumination. The tempLED RayLine Eco is a flexibly usable LED line lighting system that impresses with top performance in various applications.





Our customer Airbus

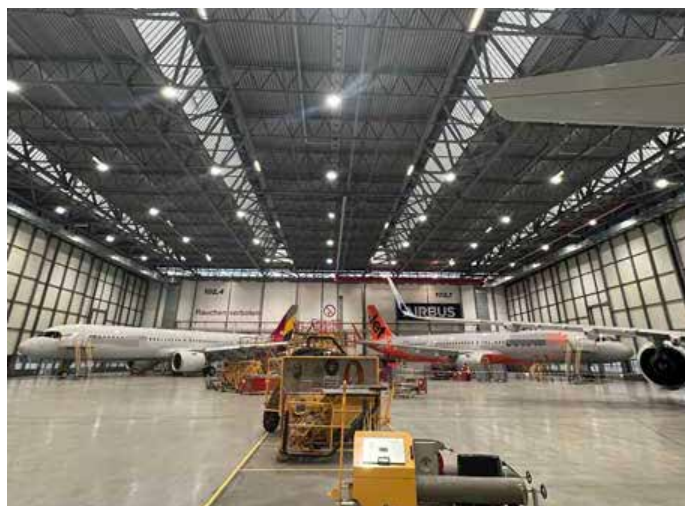
Challenges:

Uniform illumination,
Demanding production environment
Great heights

Solutions:

tempLED RayBeam Hi V2 HT

tempLED luminaires now also illuminate the Airbus hangar in Hamburg. With 400 watts and 60,000 lumens, they are particularly impressive because of their high efficiency. No mistakes are allowed to happen in the delivery hall. Airbus therefore attaches great importance to the perfect and reliable illumination of the high hall. The fact that this also saves energy and costs is a sustainable side effect that pays off.





ArcelorMittal

Our customer ArcelorMittal

Challenges:

Very high temperatures up to +80°C
Light spot heights up to 20 m
High degree of pollution

Solutions:

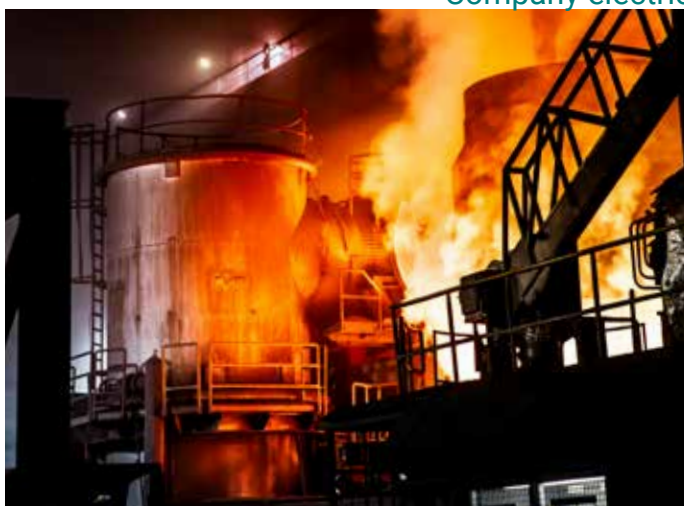
tempLED RayBeam Hi HT
tempLED RayBeam HT
tempLED RayProof
tempLED RayFlex



„Due to the already very good references of tempLED, we also had our steel and hot rolling mill equipped with the LED luminaires and are very satisfied. It is amazing what high temperatures the luminaires can withstand for so long.“

-

Company electrician at ArcelorMittal





Our customer Böhler Bleche

Challenges:

Particularly high temperatures
Mounting on the bridge cranes
High degree of pollution

Solutions:

tempLED RayBeam HT
tempLED RayTrack
tempLED RayLite Pro with Casambi



„Over the years, we have entrusted tempLED with several projects. Currently, we are being equipped with the RayLite Pro series including the Casambi radio control. We enjoy the all-round service that tempLED offers. The additional options, such as Casambi, make planning much easier for us.“

Technician & energy manager at Böhler Bleche





thyssenkrupp

Our customer ThyssenKrupp

Challenges:

High temperatures up to +70°C
Light spot heights up to 35 m

Solutions:

tempLED RayBeam Hi HT



1,000 +
luminaires

"In 1816, we at ThyssenKrupp produced cast steel for the first time. Even today - more than 200 years later - modern production still presents us with challenges. Temperatures of up to 70°C have to be withstood not only by us, but also by the production environment. Thanks to the sustainable tempLED luminaires, we not only save money, the lighting efficiency has also improved many times over."

Master electrician at ThyssenKrupp Oxygenstahlwerk 2





Our customer Vallourec

Challenges:

High temperatures up to +70°C
High degree of pollution in the rolling mill
and the tube contour mill

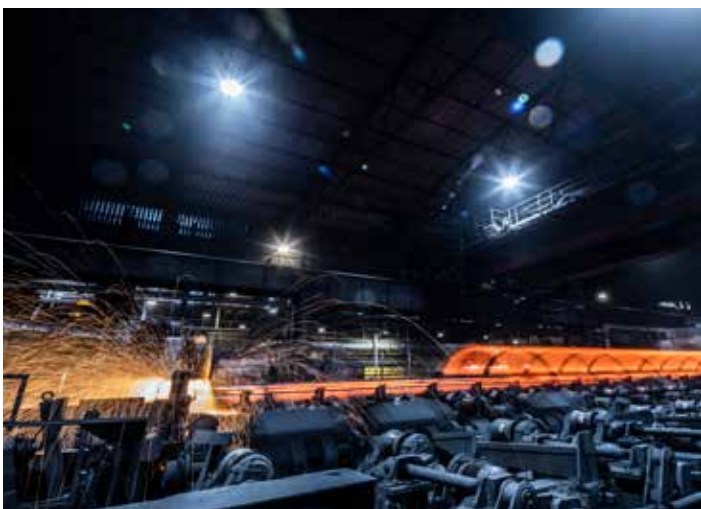
Solutions:

tempLED RayBeam Hi HT



„Seamless hot-rolled steel tubes for different areas of application in industry - for the production of these premium tubes we need optimal working conditions. The use of high-quality luminaires that can withstand not only the high temperatures but also the dirt generated during production is therefore essential. In tempLED we have found a competent partner who has advised and accompanied us from the very first second.“

Master electrician & maintenance at Vallourec





 FERALPI STAHL

Our customer ESF Feralpi Stahl

Challenges:

Very high temperatures up to +80°C
High degree of pollution in the rolling mill & billet
store, uniform illumination

Solutions:

tempLED RayBeam V2, tempLED RayTrack Pro,
tempLED RayField V2



ESF Feralpi Stahl has been a loyal and satisfied customer of ours for over five years. Here, we have equipped both the steel and wire plants indoors and outdoors with our LED lighting. Some of the temperatures there can exceed 90°C! Of course, this also requires strong lighting. Our RayBeam V2 successfully resists the ambient temperatures - also because, thanks to our unique modularity, we were able to move the power supply away from the luminaire. Due to the separate mounting, the luminaire does not lose power.





Our customer Norske Skog

Challenges:

Hot and cold areas
Particularly high mounting heights
High illuminance with few light points

Solutions:

tempLED RayBeam HT
tempLED RayLite
tempLED RayTrack



„With a production capacity of around 400,000 tonnes of paper every year, we cannot afford any downtime. Therefore, we also placed great emphasis on the lighting situation and were not disappointed by the quality and efficiency of the tempLED luminaires. Furthermore, we ourselves invest a lot in sustainability, which was one of the reasons why we chose tempLED.“

Head of electrical engineering & automation at Norske Skog





voestalpine

Our customer Voestalpine

Challenges:

High temperatures
High mounting heights
High illuminance with few light points

Solutions:

tempLED RayBeam Hi HT
tempLED RayLance



„We place the highest value on precision in our work. Our demands on the lighting were correspondingly high in order to be able to guarantee this precise work. With tempLED, we have found a partner who shares our values.“

Maintenance & engineering at Voestalpine Precision Strip





Our customer Drahtwerk Plochingen



Drahtwerk
Plochingen GmbH

Challenges:

Very high dust level
Very high degree of pollution

Solutions:

tempLED RayBeam



„The tempLED RayBeam high-bay luminaire is efficient and optimally suited for our production environment. The competent all-round service has convinced us to the fullest extent.“

Industrial- / electrical master craftsman





trimet

Our customer Trimet Aluminium

Challenges:

High altitudes
High dust levels
High temperatures up to +70°C

Solutions:

tempLED RayBeam V2



Three 15-metre high and 600-metre long production halls where aluminium is manufactured. Production not only causes a lot of dust, it also gets hot - our LED high-bay luminaire tempLED RayBeam V2 has to withstand temperatures of up to 70°C. However, high temperatures are no problem for the LED industrial luminaire: the luminaire, whose housing is made of extruded aluminium, easily copes with temperatures of up to 80°C. Thanks to the permeable construction of the housing and a special cover lens with a smooth surface that is placed in front of the LEDs, dust and dirt cannot adhere to the luminaire. The perfect lighting partner for industrial environments. Together with our reliable installation partner, tsc, we accompanied the project at Trimet through to the finished installation of the LED luminaires.





Our customer Vetropack

Challenges:

Very high temperatures up to +80°C
High degree of pollution
Special demands on the assembly

Solutions:

tempLED RayBeam HT

Glass production poses great challenges for our tempLED RayBeam HT: Temperatures of up to 1,500°C are generated during the melting process in the glass melting furnaces. It is hardly surprising that the heat also extends to the surroundings and our LED high-bay luminaire then has to withstand up to 80°C - every day. Despite the massive temperatures and the high level of pollution that also occurs during production, our LED high bay luminaire has remained highly motivated for several years. No wonder, with a service life of 100,000 hours.





stürmsfs

Our customer stuermsfs

Challenges:

Great heights
Uniform illumination

Solutions:

tempLED RayBeam
tempLED RayLite
tempLED RayTrack

An exciting project that we already implemented a few years ago is the LED retrofit at the traditional company stuermsfs, whose foundation stones were laid as early as 1835. Especially with the LED equipment of the large production halls, where work is done with aluminium, steel and stainless steel, attention had to be paid to efficiency and uniform, strong illumination. Our LED high-temperature light RayBeam V2 meets these requirements. We have not only equipped the company's production halls and warehouses with our LED luminaires, but also the outdoor area. The all-round package for indoor and outdoor lighting, so to speak.





Our customer Das Zürich Haus

Challenges:

Great heights of 20m
Spot lighting adapted to the
special architectural design



Solutions:

Custom made tempLED RayBeam 500

The Zürich Haus project in Hamburg is a classic example of the customised challenges we take on and for which we find an individual solution. Our RayBeam 500 LED high-bay luminaire, which is otherwise also used in high temperatures, was not used for a production or steel hall, but was to be adapted to the architectural features of the building. Together with the customer, we thus developed a customised solution that meets all requirements.





Our customer Skistation Hexenwasser

Challenges:

Uniform illumination
No glare on the ski slope
3,000 K for protection of nocturnal animals

Solutions:

tempLED RayField V2
tempLED RayTrack

In the middle of the Wilder Kaiser holiday region in Austria is the eventful Hexenwasser ski station, which we were allowed to equip with a dozen of our RayField V2 and RayTrack series LED floodlights. To avoid dazzling skiers on the slopes, uniform illumination was important. No problem for our flexible LED outdoor lighting. The high-performance LED floodlights with the high-performance light-directing optics are the ideal lighting solutions for demanding outdoor lighting. To do justice not only to athletes but also to insects, we have equipped the LED floodlights with environmentally friendly 3,000 Kelvin - so nocturnal animals are not disturbed by the light either.





Our customer FC Wildschönau

Challenges:

Great heights
Uniform illumination
Environment and insect friendly
Low glare

Solutions:

tempLED RayField V2

There are no half measures at FC Wildschönau. Whether it's training or competitions - for a successful game, you need strong outdoor lighting. For this, we also chose our „strongest“ in the team: The RayField V2 was mounted on a total of six poles, each with 2x 210,000lm. Our LED floodlights provide optimal lighting conditions, even in bad weather. Uniform illumination of the sports field, high efficiency and a reduction in light immissions are the result of this sporting project. The modern LED floodlight system thus not only ensures high cost savings, but also a targeted playing comfort. A real team player!





Our customer **Gemeinde Kiefersfelden**

Challenges:

Uniform illumination
Great heights
Ball impact safety

Solutions:

tempLED RayLance
tempLED RayProof

Fitting out the sports hall of the municipality of Kiefersfelden is just one of several projects that we have implemented in the municipality over the years. As we have our company headquarters in Kiefer, it is a special pleasure for us every time to equip the municipality with our LED luminaires. In this case, in addition to the sports hall of a secondary school, we also equipped the stage and the prop back room with our LED luminaires tempLED RayLance and tempLED RayProof. The special feature here is the ball-throw resistance of the tempLED RayLance, which is a prerequisite for equipping indoor sports areas.





Our customer Blohm+Voss

Challenges:

Realisation of a large-scale outdoor lighting for the outdoor warehouse and production
Large mounting heights

Solutions:

tempLED RayField V2
tempLED RayProof
with Casambi

Blohm+Voss



500 +
luminaires

With its 43 km long quay wall, almost 300 berths for seagoing vessels, four modern container terminals and around 50 transshipment facilities, the Port of Hamburg is one of the most powerful in the world. To remain competitive, it needs equally powerful lighting. Not only have we equipped the docks of the Port of Hamburg with a large number of RayField V2 LED floodlights, but hundreds of RayProofs are also installed in the numerous halls. The challenge with the industrial outdoor lighting was to overcome the light point heights, which were up to almost 30 metres for the docks and outdoor masts. Nevertheless, the large area had to be optimally illuminated. The LED floodlights now reduce scattered light losses to a minimum and ensure homogeneous lighting conditions. Particularly exciting was the demanding installation in combination with the setup of the Casambi radio solution. All luminaires of the LED floodlight system at Dock 10 are equipped with the smart radio control and can be managed via a smartphone.





Our customer Matthäi

Challenges:

Great outdoor heights

Solutions:

tempLED RayLite
tempLED RayTrack Pro



„We have equipped our entire location in Langenhagen with tempLED luminaires and are more than satisfied with our choice.“

Company electrician at Matthäi Bauunternehmen





Our customer Dinkhauser Kartonagen

Challenges:

High temperatures up to +70°C
High dust and dirt accumulation

Solutions:

tempLED RayLine Eco

We accompanied our installation partner, tempLED Service Center, during the installation of RayLine Eco. Our customer Dinkhauser Kartonagen had the efficient and long-lasting LED light strip installed over a length of 600 metres. There, the linear luminaire not only withstands a high degree of dust and dirt, but also an increased working temperature.

